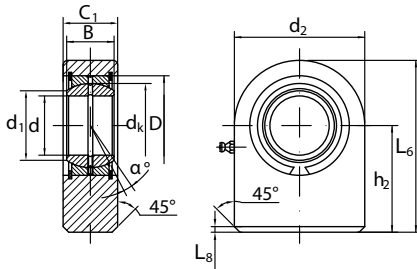


GF..DO



GF..DO - Weldable rod end requiring maintenance with grease nipple and grease groove

Spherical Plain Bearing with inner- and outer ring of steel. Wider inner ring and larger outer diameter. Relubrication needed. With or without integrated seals.

Weldable rod end made of a zinc plated steel housing with a GE..ES or GE..ES 2RS spherical plain bearing mounted

Designation	Dimensions mm										Load ratings kN	
	d	B	C ₁	d ₂	L ₆	L ₈	h ₂	d _k	d ₁	D	dyn. C	stat. C ₀
GF 20 DO	20	16	19	50	63	2	38	29	24.2	35	30.0	67.0
GF 25 DO	25	20	23	55	72.5	2	45	35.5	29.3	42	48.0	69.5
GF 30 DO	30	22	28	65	83.5	2	51	40.7	34.2	47	62.0	118
GF 35 DO	35	25	30	83	102.5	2	61	47	39.8	55	80.0	196
GF 40 DO	40	28	35	100	119	3	69	53	45.0	62	100	300
GF 45 DO	45	32	40	110	132	3	77	60	50.8	68	127	380
GF 50 DO	50	35	40	123	149.5	3	88	66	55.9	75	156	440
GF 60 DO	60	44	50	140	170	4	100	80	66.8	90	245	570
GF 70 DO	70	49	55	164	197	4	115	92	77.9	105	315	695
GF 80 DO	80	55	60	180	231	4	141	105	89.4	120	400	780
GF 90 DO	90	60	65	226	263	4	150	115	98.1	130	490	1340
GF 100 DO	100	70	70	250	295	4	170	130	109.5	150	610	1500
GF 110 DO	110	70	80	295	332.5	4	185	140	121.2	160	635	2160
GF 120 DO	120	85	90	360	390	4	210	160	135.5	180	950	3250