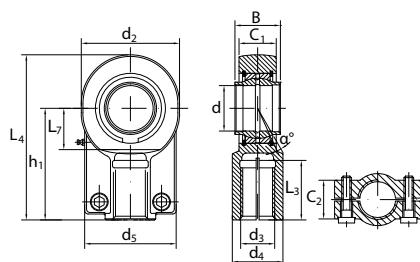


GIHN-K..LO



GIHN-K..LO - Rod end requiring maintained with grease nipple, grease groove and locking nuts

Rod end with right or left-hand female thread made of a zink plated steel housing with a GE..LO spherical plain bearing mounted.

* without grease hole and grease nipple, For left hand thread, add L to the designation, e.g. GIHN-KL 30 LO

Designation	Dimensions mm												Load ratings kN	
	d	d ₃	d ₄	L ₃	B	C ₁	d ₂	L ₂	h ₁	L ₄	d ₅	C ₂	dyn. C	stat. C ₀
GIHN-K 12 LO*	12	M12x1.25	16.5	17	12	11	32	14	38	54	32	11	10.8	24.5
GIHN-K 16 LO	16	M14x1.5	21	19	16	14	40	18	44	64	40	14	17.6	36.5
GIHN-K 20 LO	20	M16x1.5	25	23	20	17	47	22	52	77	47	17	30.0	48.0
GIHN-K 25 LO	25	M20x1.5	30	29	25	22	58	27	65	96	54	19	48.0	78.0
GIHN-K 32 LO	32	M27x2.0	38	37	32	28	71	32	80	118.5	66	22	67.0	114
GIHN-K 40 LO	40	M33x2.0	47	46	40	33	90	41	97	146	80	26	100	204
GIHN-K 50 LO	50	M42x2.0	58	57	50	41	109	50	120	179.5	96	32	156	310
GIHN-K 63 LO	63	M48x2.0	70	64	63	53	136	62	140	213	114	38	255	430
GIHN-K 70 LO	70	M56x2.0	80	76	70	57	155	70	160	245	135	42	315	540
GIHN-K 80 LO	80	M64x3.0	90	86	80	66	168	78	180	270	148	48	400	695
GIHN-K 90 LO	90	M72x3.0	100	91	90	72	185	85	195	296	160	52	490	750
GIHN-K 100 LO	100	M80x3.0	110	96	100	84	210	98	210	322	178	62	610	1060
GIHN-K 110 LO	110	M90x3.0	125	106	110	88	235	105	235	364	190	62	655	1200
GIHN-K 125 LO	125	M100x3.0	135	113	125	102	260	120	260	405	200	72	950	1430